

18-33

March 16, 2018

Tokyo Metro to open a Tourist Information Counter at Tokyo Station on Sunday, April 1!

Hours available at counters at 5 stations to be changed starting the same day

On Sunday, April 1, 2018, Tokyo Metro (Head Office in: Taito Ward, Tokyo; President: Akiyoshi Yamamura) **will open a new Tourist Information Counter in Tokyo Station, which is characterized by large numbers of both Japanese and foreign travelers and passengers who are unfamiliar with subways.**

Presently, there are Tourist Information Counters installed at five stations: Ueno Station, Ginza Station, Shinjuku Station, Omote-sando Station and Shibuya Station*. The one at Tokyo Station will constitute the sixth. (*The Tourist Information Counter at Shibuya Station is jointly operated with Tokyu Corporation.)

Similar to the Travel Information Counters that Tokyo Metro has operated up to this point, the new one to be opened at Tokyo Station will be staffed with employees capable of providing information in English and Chinese, and will also offer special tickets in the form of the "Tokyo Subway Ticket" and the "Greater Tokyo Pass" for purchase by foreign travelers to Japan.

Additionally, starting April 1, 2018, **in consideration of passenger needs and more understandable times, the existing hours available at the Tourist Information Counters at Ueno Station, Ginza Station, Shinjuku Station, Omote-sando Station and Tokyo Station will be changed from "9:15 AM – 5:15 PM" to "9:00 AM – 5:00 PM."**

Going forward, Tokyo Metro will continue its proactive endeavors to enable it to assist passengers in a convenient and easy-to-understand manner as their "guide to Tokyo."

Please see the attachment to this release for an overview of this endeavor.

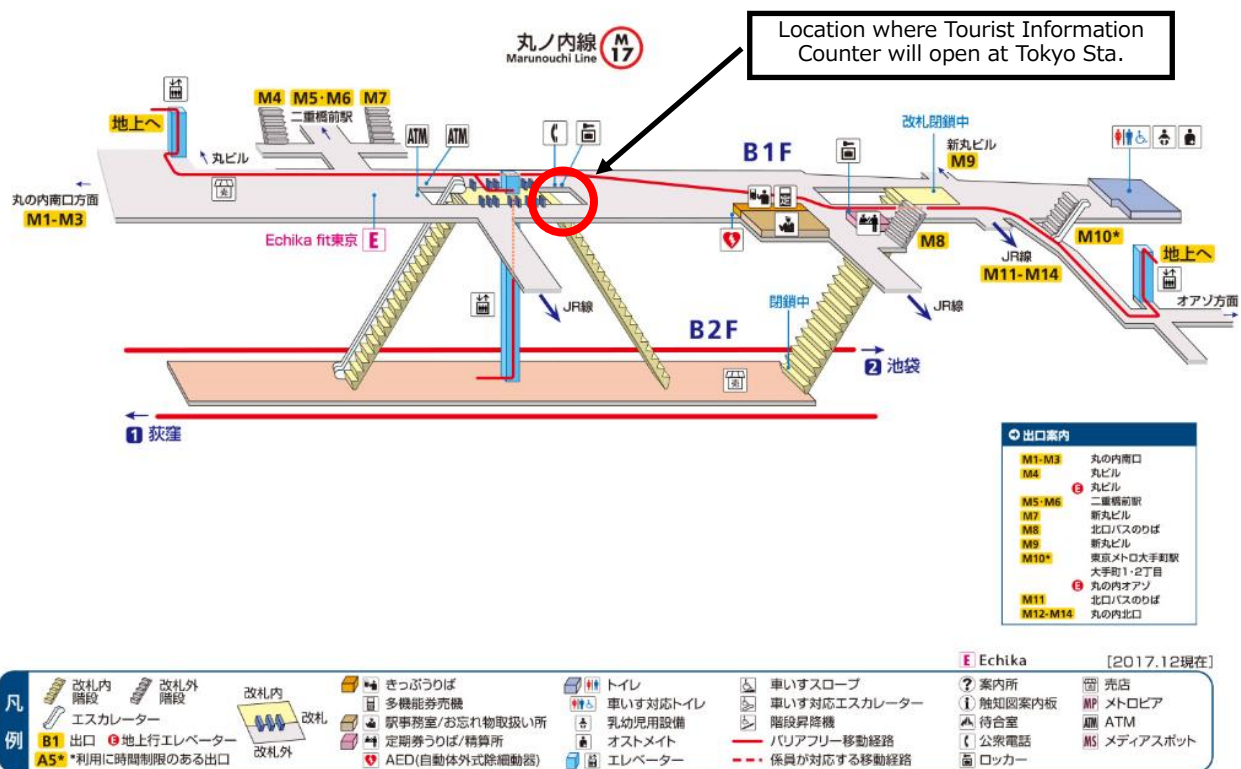


Tourist Information Counter at Tokyo Station (image representation)

Opening of New Tourism Information Counter at Tokyo Station: Details

1. Opening Date
Sunday, April 1, 2018
2. Hours Available
9:00 AM – 5:00 PM (Available 365 days a year)
*Starting April 1, hours available at the Tourist Information Counters at Ueno Station, Ginza Station, Shinjuku Station and Omote-sando Station will also be changed to “9:00 AM – 5:00 PM.”
3. Opening Location
Near the Central Ticket Gate at Tokyo Station on the Marunouchi Line

丸ノ内線東京駅構内立体図



4. Information/Services to Be Provided
 - (1) Information on facilities around Tokyo Station (hotels, sightseeing spots, etc.)
 - (2) Information on how to use Tokyo Metro and other transportation facilities (how to transfer trains, purchase tickets, etc.)
 - (3) Information on how to access airports
 - (4) Other information, including that on tourist spots
 - (5) Sales of “Tokyo Subway Ticket” and “Greater Tokyo Pass” special tickets to foreign travelers to Japan

“Tokyo Subway Ticket” and “Greater Tokyo Pass:” Details

1 Tokyo Subway Ticket

(1) Ticket types and price

- i. Tokyo Subway 24-hour Ticket (Valid for 24 hours after first use)
Adults: 800 yen/Children: 400 yen
- ii. Tokyo Subway 48-hour Ticket (Valid for 48 hours after first use)
Adults: 1,200 yen/Children: 600 yen
- iii. Tokyo Subway 72-hour Ticket (Valid for 72 hours after first use)
Adults: 1,500 yen/Children: 750 yen

(2) Valid routes

All Tokyo Metro lines and all Toei Subway lines

(3) Available for purchase by

Foreign travelers to Japan and certain Japanese travelers. For details on conditions of purchase and locations available, please refer to the Tokyo Metro website at:

http://www.tokyoMetro.jp/lang_en/ticket/value/travel/index.html

(4) Partnership discounts and services

Passengers can receive special benefits in the form of discounts, free gifts and more at over 400 spots on Tokyo Metro and Toei Subway lines when they show their Tokyo Subway Ticket. Details can be found in the “Chikatoku” guidebook distributed in Japanese and English at stations on those lines as well as at the following special website: <http://chikatoku.enjoytokyo.jp/en/>

2 Greater Tokyo Pass

(1) Ticket types and price

Greater Tokyo Pass (3 consecutive-day pass starting from date of purchase)
Adults: 7,200 yen/Children: 3,600 yen

(2) Valid routes

Railways and streetcars operated by 12 companies and ordinary fixed-route buses operated by 52 companies in the Kanto area

(3) Available for purchase by

Foreign travelers to Japan. For details on conditions of purchase and locations available, please refer to the Tokyo Metro website at:

http://www.tokyoMetro.jp/lang_en/news/191511.html?width=816&height=650