

Information from Tokyo Metro

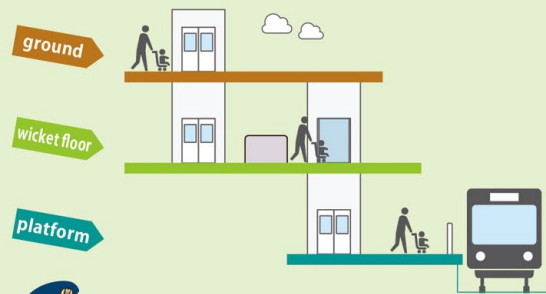
Taking the Subway with a Stroller

Tokyo Metro is committed to making its stations stroller friendly, so we have been busy working to ensure that people with strollers can go all the way from the entrance to the platform smoothly without having to tackle any stairs.

Inside our stations

To move from ground level to the fare gates and from the fare gates to the platform, please use a route that uses the elevators and avoids the stairs.

*These routes are provided in 143 of Tokyo Metro's 179 stations. We are working towards providing these facilities in even more of our stations. (As of April 1, 2015)



If you have any problems, please ask a station employee for assistance.



Danger!

Do not take a stroller carrying a baby onto the escalators. It is too easy to lose your balance and fall, or hit other passengers. Always fold your stroller down before riding the escalators.



Caution!

Some areas on the platforms have an incline, therefore when waiting for your train, apply the brakes and maintain a firm grip on the handle of the stroller at all times. When boarding or disembarking with a stroller, please mind the gap between the train and the platform.

For peace of mind, plan ahead when out and about with children

Accidents happen and people get hurt when they are rushing for the train! Taking the elevator to the platform is not always the fastest route. Also the corridors and elevators can become crowded as well, so please be sure to always allow plenty of time to make your train on time.

Using Tokyo Metro with Baby



On the subway

You can ride the subway without folding your stroller down. On each train set, there are two areas designated as multi-purpose spaces. These are marked with a stroller sign. Please be respectful of other users when using this space.



*Note: However, there are some exceptions and some train sets may not have this multi-purpose space.

POINT Multi-functional restrooms for your convenience

You can use the multi-functional restrooms in our stations equipped with baby changing tables, baby and toddler safety seats, and changing boards. Please be considerate of other passengers who may need to use these facilities too.



POINT Station accessibility information

For accessibility information such as which car to take to be nearest to the location of elevators and multi-functional restrooms at your destination, please check the Transfer & Exit Guide at the platform or grab a copy of the Tokyo Metro Guide available from the blue racks at Tokyo Metro stations.

