



Online Courses

Tokyo Metro Academy

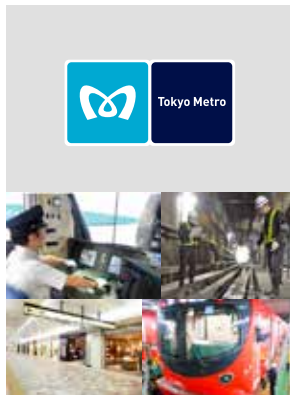
2022 - 2023





Contributing to sustainable development of cities around the world!

Tokyo Metro Academy: Online courses where you can learn from the expertise and experience in railway operations of Tokyo Metro



Our initiatives, experiences, achievements, and expertise



Online Courses



Disclosed information can be utilized by participants in their future work.

Course Level

	Advanced Course	for those who have 3 years or more of experience in the railway industry
	Basic Course	for those who have less than 3 years of experience in the railway industry
	Introductory Course	for those aspiring to work in the railway industry (students, etc.)

Online Courses

2022 No.2 Advanced	Electrical Facilities: Energy Conservation	Aug. 2022
2022 No.3 Advanced	Safety: Accidents and Disasters	Sep. 2022
2022 No.4 Advanced	Train Operations 1: Enhancing Punctuality	Oct. 2022
2022 No.5 Advanced	Non-rail business: Station Commercial Facilities	Nov. 2022
2022 No.6 Basic	Rolling Stock: Maintenance	Dec. 2022
2023 No.1 Basic	Train Operations 2: OCC	Jan. 2023
2023 No.2 Basic	Infrastructure: Track Maintenance	Feb. 2023
2023 No.3 Introductory	General: Operations and Maintenance	Feb. 2023

KEY DETAILS

Language	English
Lecture Fee	45,000 JPY (3 hours) / 23,000 JPY (1 hour 30 min.) [2022 No. 2 only] / 15,000 JPY (1 hour 30 min.) [2023 No. 3 only]
Payment method	PayPal * Cut-off date: Please apply at least one business day before each lecture in order to receive related-materials by email in advance.

Application (Official website)



https://www.tokyometro.jp/lang_en/corporate/tokyo_metro_academy/

Please follow us!



Contact us : tokyometro-online-courses@tokyometro.jp

ONLINE COURSE

2022
No. 2
Electrical Facilities
Advanced Course

Energy Conservation Initiatives


Stationary energy storage system

Station auxiliary power supply unit

KEY POINT

By learning an overview of various energy conservation equipment at Tokyo Metro and the process when considering such equipment, you will be able to use them as a reference when doing so.

OVERVIEW

We will introduce an overview of the various energy conservation equipment installed in Tokyo Metro, and also the sequence of events from the feasibility study to full-scale implementation of the stationary energy storage system and station auxiliary power supply unit for regenerative power equipment.

LECTURE CONTENTS

1) Introduction to energy conservation

- History of energy conservation technologies
- Status of energy consumption

2) Overview of various examples of energy conservation equipment

- Regenerative power equipment
(Stationary energy storage system, Inverter for regenerative electric power, Station auxiliary power supply unit)
- Equipment for effective use of renewable energy (Solar power generation system, etc.)
- Energy conservation equipment

3) Technological development of energy conservation equipment

- From feasibility study to full-scale implementation of stationary energy storage system
- From feasibility study to full-scale implementation of station auxiliary power supply unit

4) Trend of energy conservation technologies

- Recent energy conservation related technological trends in the railway sector

KEY DETAILS

Dates and Times

- **August 4th, 18th, and 25th, 2022 (The same content will be presented on each day.)**
 - August 4th, 2022 3:00 p.m. JST / 8:00 a.m. CEST / 2:00 a.m. EDT <Duration: 1 hour 30 min.>
 - August 18th, 2022 7:00 p.m. JST / 12:00 p.m. CEST / 6:00 a.m. EDT <Duration: 1 hour 30 min.>
 - August 25th, 2022 7:00 a.m. JST / 12:00 a.m. CEST / 6:00 p.m. (24th) EDT <Duration: 1 hour 30 min.>

Targets

Advanced Course: for those who have 3 years or more of experience in the railway industry.

Location

Online (Cisco webex)

Language

English (Lectures will be in English. Q&A and panel discussion will be conducted with the help of JP<->EN interpretation.)

Lecture Fee

23,000 JPY (per day) Note: Applications within Japan are subject to the tax separately.
* Cut-off date: Please apply at least one business day before each lecture in order to receive related-materials by email in advance.

Certificate

Attendance Certificate (digital) will be issued.

LECTURER



YOSHIKI SHIMIZU

Joined 2006. Engaged in planning, design, and maintenance of railway facilities, investigating introduction of new technologies, and international procurement of goods. He acted as the test manager for the field testing for the introduction of the stationary energy storage system for emergency driving.

More Info and application



https://www.tokyo-metro.jp/lang_en/corporate/tokyo_metro_academy/

You can apply regardless of your field.

ONLINE COURSE

2022
No. 3

Safety

 Advanced Course

Responses, Countermeasures and Training to handle Accidents and Disasters



Emergency response system



Safety equipment



Disaster countermeasures



Human resource development

KEY POINT

By learning about Tokyo Metro's various responses, countermeasures, and training for accidents and disasters, etc., you will be able to use them as a reference when considering such countermeasures.

OVERVIEW

We will introduce examples of emergency responses to handle accidents and disasters, station and train safety measures, disaster and railway terrorism countermeasures, as well as training and drills to improve safety.

LECTURE CONTENTS

1) Establishment of an emergency response system in the event of an accident or disaster, etc.

- Implementation details of emergency response system
- Implementation of various types of drills in preparation for accidents and disasters, etc. (comprehensive drills simulating emergencies, drills in cooperation with the government, etc.)

2) Safety measures

- Station safety measures
- Train safety measures

3) Disaster and railway terrorism countermeasures

- Countermeasures against earthquakes, large-scale flooding, strong wind, wide-spread power outage, fire, and railway terrorism

4) Human resource development for safety improvements

- Training and drills aimed at equipping employees with the necessary knowledge and skills to ensure transportation safety and provide peace of mind

KEY DETAILS

Dates and Times

- September 1st, 8th, and 15th, 2022 (The same content will be presented on each day.)
 - September 1st, 2022 3:00 p.m. JST / 8:00 a.m. CEST / 2:00 a.m. EDT <Duration: 3 hours>
 - September 8th, 2022 7:00 p.m. JST / 12:00 p.m. CEST / 6:00 a.m. EDT <Duration: 3 hours>
 - September 15th, 2022 7:00 a.m. JST / 12:00 a.m. CEST / 6:00 p.m. (14th) EDT <Duration: 3 hours>

Targets

Advanced Course: for those who have 3 years or more of experience in the railway industry.

Location

Online (Cisco webex)

Language

English (Lectures will be in English. Q&A and panel discussion will be conducted with the help of JP<->EN interpretation.)

Lecture Fee

45,000 JPY (per day) Note: Applications within Japan are subject to the tax separately.
* Cut-off date: Please apply at least one business day before each lecture in order to receive related-materials by email in advance.

Certificate

Attendance Certificate (digital) will be issued.

LECTURER



CHIAKI KARASAWA

Joined 2007. Engaged in planning, design, and maintenance of signal, communication and AFC system. He also engaged in the international procurement of goods and overseas railway rehabilitation project of signal and communication equipment.

More Info and application



https://www.tokyo-metro.jp/lang_en/corporate/tokyo_metro_academy/

You can apply regardless of your field.

ONLINE COURSE

2022
No. 4

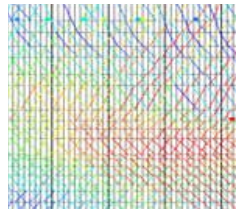
Train Operations 1

 Advanced Course

Effective Method for Enhancing Punctuality



Train delays



Evaluation & Analysis



Train timetable



Rolling stock



Platform, etc.

Improvement measures

KEY POINT

By learning concrete examples of Tokyo Metro improvements, you will be able to use them as a reference when considering solutions to delays.

OVERVIEW

On the Tozai Line, Tokyo Metro's busiest line, we will introduce a series of processes that have improved punctuality in train operations through a combination of various measures based on the results of train delay surveys. The measures which have been implemented include analysis by Buffer Index (evaluation index of train delay quality), reviews of train timetables, changes of station operations, and improvements in various facilities.

LECTURE CONTENTS

1) Overview of train operations

- Overview of train operations on the nine Tokyo Metro lines, and transport records

2) Transport planning basics

- Basic concept of creating train timetables

Prerequisites (line conditions, rolling stock and ground equipment, number of passengers, etc.)
Setting of running time, station dwell time, running headway, etc.

3) Evaluation and analysis methods for delays

- Detailed analysis and evaluation using Buffer Index based on the overall picture of delays from train operation performance data and field survey results

4) Improvement measures for train delays

- Implemented measures including reviews of train timetables, changes of station operations, improvements in various facilities (signaling, rolling stock, station facilities) and their effectiveness (44% improvement on max delay time) to improve the delay on the Tozai Line, the busiest Tokyo Metro line, based on the analysis and evaluation results

KEY DETAILS

Dates and Times

- **October 13th, 20th, and 27th, 2022 (The same content will be presented on each day.)**
 - **October 13th, 2022 3:00 p.m. JST / 8:00 a.m. CEST / 2:00 a.m. EDT <Duration: 3 hours>**
 - **October 20th, 2022 7:00 p.m. JST / 12:00 p.m. CEST / 6:00 a.m. EDT <Duration: 3 hours>**
 - **October 27th, 2022 7:00 a.m. JST / 12:00 a.m. CEST / 6:00 p.m. (26th) EDT <Duration: 3 hours>**

Targets

Advanced Course: for those who have 3 years or more of experience in the railway industry.

Location

Online (Cisco webex)

Language

English (Lectures will be in English. Q&A and panel discussion will be conducted with the help of JP<->EN interpretation.)

Lecture Fee

45,000 JPY (per day) Note: Applications within Japan are subject to the tax separately.
* Cut-off date: Please apply at least one business day before each lecture in order to receive related-materials by email in advance.

Certificate

Attendance Certificate (digital) will be issued.

LECTURER



KOHEI USHIDA

Joined 1984. Based on his experience as a station attendant, conductor, train driver, traffic control dispatcher, transportation planner, and driver trainer, he has worked on a variety of overseas projects. He also contributed to the development of the Buffer Index.

More Info and application



https://www.tokyo-metro.jp/lang_en/corporate/tokyo_metro_academy/

You can apply regardless of your field.

ONLINE COURSE

2022
No. 5

Non-rail business

 Advanced Course

Development of Commercial Facilities at Stations



Underground station commercial facilities



Commercial facilities under elevated railways



Commercial facilities in station building

KEY POINT

By learning about the necessity and examples of business scale expansion of commercial facilities that are underground, above-ground, under elevated railways, and inside station buildings, you will be able to use them as a reference when considering the development of commercial facilities at existing and new stations.

OVERVIEW

We will introduce why commercial facilities are necessary in stations, examples of business scale expansion, and also an overview of planning, development, and operational management for commercial facilities underground and above-ground stations, under elevated railways, and station building complexes.

LECTURE CONTENTS

1) Necessity of station commercial facilities

- Necessity of business development of station commercial facilities for railway operators

2) Business scale expansion of station commercial facilities

- Development of station commercial facilities since about 90 years ago
- Business scale expansion of station commercial facilities since about 30 years ago
- Further business scale expansion of station commercial facilities since about 20 years ago

3) Overview of planning, development, and operational management of station commercial facilities

- Concept, development plan, tenant management, etc.

KEY DETAILS

Dates and Times

- November 10th 17th, and 24th, 2022 (The same content will be presented on each day.)
 - November 10th, 2022 3:00 p.m. JST / 7:00 a.m. CET / 1:00 a.m. EST <Duration: 3 hours>
 - November 17th, 2022 7:00 p.m. JST / 11:00 a.m. CET / 5:00 a.m. EST <Duration: 3 hours>
 - November 24th, 2022 7:00 a.m. JST / 11:00 p.m. (23rd) CET / 5:00 p.m. (23rd) EST <Duration: 3 hours>

Targets

Advanced Course: for those who have 3 years or more of experience in the railway industry.

Location

Online (Cisco webex)

Language

English (Lectures will be in English. Q&A and panel discussion will be conducted with the help of JP<->EN interpretation.)

Lecture Fee

45,000 JPY (per day) Note: Applications within Japan are subject to the tax separately.
* Cut-off date: Please apply at least one business day before each lecture in order to receive related-materials by email in advance.

Certificate

Attendance Certificate (digital) will be issued.

LECTURER



TAKAHIRO TANISAKA

Joined 2000. Engaged in various projects involving overseas support and technical cooperation. Currently, he acts as the training leader for the project to support the establishment and strengthen the operational capacity of the Philippine Railways Institute, commissioned by JICA*.

*JICA: Japan International Cooperation Agency


More Info and application



https://www.tokyometro.jp/lang_en/corporate/tokyo_metro_academy/

You can apply regardless of your field.

ONLINE COURSE

2022 No. 6	 Rolling Stock	Rolling Stock Maintenance
	▲ Basic Course	



New rolling stock



Periodic inspection



Each equipment inspection

KEY POINT

You will be able to gain a general understanding of the specific inspection plans and work involved in Tokyo Metro's rolling stock maintenance, and by comparing and verifying your rolling stock maintenance, you will be able to use this information as a reference when considering improvements to your work.

OVERVIEW

We will introduce an extensive overview of various inspections aimed at maintaining soundness and functionality and reducing the possibility of failures to achieve Tokyo Metro's rolling stock maintenance, as well as the utilization of inspection and repair information to realize high-quality inspections.

LECTURE CONTENTS

1) Inspection and repair system of Tokyo Metro's rolling stock

- Types of inspections, facilities for inspections, establishment and operation of maintenance standard values, and the concept of replacing consumable parts, etc.

2) Management of inspection and repair information for failure reduction

- Data collection to realize high-quality inspections by utilizing information on failure repair history and wheel wear volume, etc.

KEY DETAILS

Dates and Times

- December 1st, 8th, and 16th, 2022 (The same content will be presented on each day.)
 - December 1st, 2022 3:00 p.m. JST / 7:00 a.m. CET / 1:00 a.m. EST <Duration: 3 hours>
 - December 8th, 2022 7:00 p.m. JST / 11:00 a.m. CET / 5:00 a.m. EST <Duration: 3 hours>
 - December 16th, 2022 7:00 a.m. JST / 11:00 p.m. (15th) CET / 5:00 p.m. (15th) EST <Duration: 3 hours>

Targets

Basic Course: for those who have less than 3 years of experience in the railway industry

Location

Online (Cisco webex)

Language

English (Lectures will be in English. Q&A and panel discussion will be conducted with the help of JP<->EN interpretation.)

Lecture Fee

45,000 JPY (per day) Note: Applications within Japan are subject to the tax separately.
* Cut-off date: Please apply at least one business day before each lecture in order to receive related-materials by email in advance.

Certificate

Attendance Certificate (digital) will be issued.

LECTURER



MAKOTO SHIMIZU

Joined 1995. Based on his experience in rolling stock planning, design, maintenance operations, and international procurement, he has worked on various overseas projects.

More Info and application



https://www.tokyo-metro.jp/lang_en/corporate/tokyo_metro_academy/

You can apply regardless of your field.

ONLINE COURSE

2023
No. 1

Train Operations 2

Operations Control Center Response to Abnormalities

Basic Course



Integrated Control Center (OCC)



Operates nine lines, 195 km of track, and 2,750 cars



KEY POINT

By learning about the structure of the Integrated Control Center (OCC) at Tokyo Metro, and its response to disasters and accidents, you will be able to use them as a reference when considering improvements to the organizational structure of the OCC and response to accidents and disasters.

OVERVIEW

We will introduce the organizational structure of the OCC and the internal and external collaboration systems for responding to trouble, as well as examples of accident and disaster responses that Tokyo Metro has experienced in the past.

LECTURE CONTENTS

1) OCC organizational structure

- Role of organizations and staff in the OCC
- Internal and external collaboration systems for problem response

2) Response to disasters and accidents

- Natural disasters (earthquake, wind and flooding, etc.)
- Various accidents
- Terrorism in railway system

KEY DETAILS

Dates and Times

- January 12th, 19th, and 26th, 2023 (The same content will be prepared on each day.)
 - January 12th, 2022 3:00 p.m. JST / 7:00 a.m. CET / 1:00 a.m. EST <Duration: 3 hours>
 - January 19th, 2022 7:00 p.m. JST / 11:00 a.m. CET / 5:00 a.m. EST <Duration: 3 hours>
 - January 26th, 2022 7:00 a.m. JST / 11:00 p.m. (25th) CET / 5:00 p.m. (25th) EST <Duration: 3 hours>

Targets

Basic Course: for those who have less than 3 years of experience in the railway industry

Location

Online (Cisco webex)

Language

English (Lectures will be in English. Q&A and panel discussion will be conducted with the help of JP<->EN interpretation.)

Lecture Fee

45,000 JPY (per day) Note: Applications within Japan are subject to the tax separately.
* Cut-off date: Please apply at least one business day before each lecture in order to receive related-materials by email in advance.

Certificate

Attendance Certificate (digital) will be issued.

LECTURER



KOHEI USHIDA

Joined 1984. Based on his experience as a station attendant, conductor, train driver, traffic control dispatcher, transportation planner, and driver trainer, he has worked on a variety of overseas projects.

More Info and application



https://www.tokyo-metro.jp/lang_en/corporate/tokyo_metro_academy/

You can apply regardless of your field.

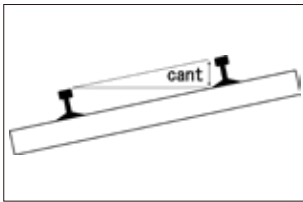
ONLINE COURSE

2023
No. 2

Infrastructure

 Basic Course

Track Maintenance



Design



Inspection



Repair



Renovation

KEY POINT

By learning about Tokyo Metro's track maintenance cycle, you will be able to use it as a reference when considering improvements to track inspection and repair.

OVERVIEW

The maintenance and management of tracks is based on the cycle of "inspection and judgment → repair planning → construction," and consists of various efforts. In this lecture, we will introduce the basics of track design, inspection and repair, as well as track maintenance efforts in urban tunnels.

LECTURE CONTENTS

1) Track design

- Fundamentals of track design

2) Track inspection

- Tracks for inspection, inspection content, inspection cycle, and judgment

3) Track repair

- Basic track repair work

4) Track renovation work

- Introduction of subway track renovation work

KEY DETAILS

Dates and Times

- February 9th, 16th, and 22nd, 2023 (The same content will be presented on each day.)
 - February 9th, 2023 3:00 p.m. JST / 7:00 a.m. CET / 1:00 a.m. EST <Duration: 3 hours>
 - February 16th, 2023 7:00 p.m. JST / 11:00 a.m. CET / 5:00 a.m. EST <Duration: 3 hours>
 - February 22nd, 2023 7:00 a.m. JST / 11:00 p.m. (21st) CET / 5:00 p.m. (21st) EST <Duration: 3 hours>

Targets

Basic Course: for those who have less than 3 years of experience in the railway industry

Location

Online (Cisco webex)

Language

English (Lectures will be in English. Q&A and panel discussion will be conducted with the help of JP->EN interpretation.)

Lecture Fee

45,000 JPY (per day) Note: Applications within Japan are subject to the tax separately.
* Cut-off date: Please apply at least one business day before each lecture in order to receive related-materials by email in advance.

Certificate

Attendance Certificate (digital) will be issued.

LECTURER



YUICHIRO YANAGISAWA

Joined 2000. Based on his experience in track planning, design, maintenance, and international procurement, he has worked on various overseas projects.



More Info and application



https://www.tokyo-metro.jp/lang_en/corporate/tokyo_metro_academy/

You can apply regardless of your field.

ONLINE COURSE

2023 No. 3	 General	<h2>Overview of Operations and Maintenance</h2>
	 Introductory Course	



Operations



Maintenance

KEY POINT

By learning an overview of Tokyo Metro's operations and maintenance, you will be able to gain basic knowledge of the operations and maintenance of a railway operator.

OVERVIEW

We will introduce an overview of "operations of trains and stations" and "maintenance of rolling stock, infrastructure, and electrical facilities," as well as an overview of "interdepartmental collaboration initiatives related to safety and service" .

LECTURE CONTENTS

1) Railway system

- Roles of railway operators and contents of railway business

2) Operations and maintenance

- Operations: Train operation and Station Operation
- Maintenance: Rolling stock, Infrastructure and Electrical facilities

3) Interdepartmental collaboration initiatives

- Safety Initiatives
- Service Initiatives

KEY DETAILS

Dates and Times

- February 7th, 14th, and 21st, 2023 (The same content will be presented on each day.)
- February 7th, 2023 3:00 p.m. JST / 7:00 a.m. CET / 1:00 a.m. EST <Duration: 1 hour 30 min.>
- February 14th, 2023 7:00 p.m. JST / 11:00 a.m. CET / 5:00 a.m. EST <Duration: 1 hour 30 min.>
- February 21st, 2023 7:00 a.m. JST/ 11:00 p.m. (20th) CET / 5:00 p.m. (20th) EST <Duration: 1 hour 30 min.>

Targets

Introductory Course: for those aspiring to work in the railway industry (students, etc.)

Location

Online (Cisco webex)

Language

English

Lecture Fee

15,000 JPY (per day) Note: Applications within Japan are subject to the tax separately.
* Cut-off date: Please apply at least one business day before each lecture in order to receive related-materials by email in advance.

Certificate

Attendance Certificate (digital) will be issued.

LECTURER



KAZUNORI WAKITA

Joined 2012. Based on his experience as a station attendant, and conductor, he had been involved in the Olympic and Paralympic projects, including demand estimation and management, operation planning, and promotion planning.



YOSHIKI SHIMIZU

Joined 2006. Engaged in planning, design, and maintenance of railway facilities, investigating introduction of new technologies, and international procurement of goods.

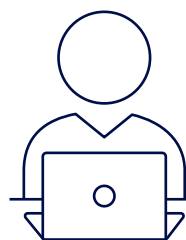
More Info and application



https://www.tokyo-metro.jp/lang_en/corporate/tokyo_metro_academy/

You can apply regardless of your field.

How To Apply for Online Courses



1 Apply to this course

Please click the link below. Choose a convenient date for you, and proceed with the application and payment for the course.

Tokyo Metro Academy Official Website

https://www.tokyometro.jp/lang_en/corporate/tokyo_metro_academy/

When your payment has been confirmed, the host will send you an invitation email. You can refer to the details, in the PDF attached to the official website.

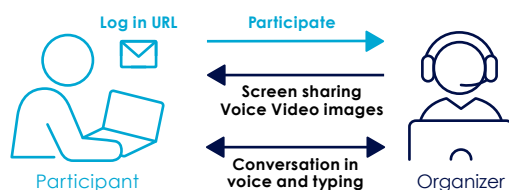


2 Application starts on April 25, 2022

*The cut-off date is 1 day before each course.

3 How to participate (Virtual classroom: Cisco Webex)

Click the link in the invitation email. The link will be open before 20 minutes the course starts.



Please note

- Please agree to the Terms of Service in order to apply. Please refer to the aforementioned PDF on the official website for the Terms of Service.

- The application method from within Japan is different than from overseas. Please refer to the aforementioned PDF on the official website for more details.

- Click on the login URL in the invitation email before the scheduled course start time. Enter the required information, such as your registration ID, on the opened web page, then click "Join Now".

- When using for the first time, you will need to install the Cisco Webex module. Follow the on-screen instructions to install the required module.

- Participants are requested to prepare the tools needed for taking the Online Courses.

Contact us : tokyometro-online-courses@tokyometro.jp

Please contact us if you would like to subscribe to our digital newsletter.

Tokyo Metro Company Profile

COMPANY OUTLINE (As of March, 2021 unless stated otherwise.)

Company Name	Tokyo Metro Co., Ltd.
Capital	¥58.1 billion
Stockholders	National Government (53.4%), Tokyo Metropolitan Government (46.6%)
Net Sales	¥269.6 billion (FY2020)
Number of Employees	9,881 employees

Railway Business

Transport Services that Support the City Function of Tokyo

(As of March, 2021 unless stated otherwise.)



9

Subway lines



Tokyo Metro Network **195 km**

Reciprocal through-services operated by other rail transport companies/**550.8 km**



99.7% (FY2020)

The on-time performance rate calculated from the arrival rate within **5 minutes** on all lines is 99.7%.



180

Stations

Operates nine subway lines and 180 stations in and around central Tokyo.



7.55 million (FY2019)
4.98 million (FY2020)

Average passengers per day

A vital link in Tokyo's transportation network



Non-rail Businesses

Growth of the Tokyo Metro Group

Retail-related Business

The variety of new, convenient, user-friendly commercial facilities under development in stations for customers.



Advertising and IT Business

A wide range of media inside stations and trains, and wireless LAN services inside stations.



Real Estate Business

Developed office buildings, hotels, housing, a golf driving range, and rental storage primarily in areas near Tokyo Metro railway lines.



Tokyo Metro Overseas Rail Business

Tokyo Metro is harnessing its expertise on the operation and maintenance of urban railways to provide various forms of technical cooperation and assistance for overseas urban railway operators.

Thailand

Data Collection Survey on the Development of Blueprint for the Second Mass Rapid Transit Master Plan

Vietnam

- Assistance for Hanoi Metro Company and Ho Chi Minh City Urban Railways No.1 Company Limited through local subsidiary Vietnam Tokyo Metro One Member Limited Liability Company
- The Project on Strengthening Management Ability of Operation and Maintenance Company for the Opening of Urban Railway Line 1 in Ho Chi Minh City
- Project for Strengthening the Urban Railway Training Capacity for Railway College

The Philippines

- Technical Assistance Project to Establish the Philippine Railways Institute
- The Detailed Design Study of the Metro Manila Subway Project
- Metro Manila Subway Project (MMSP) Phase 1 General Consultant
- North-South Commuter Railway Extension Project General Consultant

Indonesia

Operation and Maintenance Consulting Services for Project of Jakarta Mass Rapid Transit System

Training consulting

From an overview to detailed content, Tokyo Metro can provide assistance that meets your needs. We are looking forward to hearing from you about your training consulting needs.



Technical assistance for the establishment of training centers



Instructor training



Development of training programs



Customized online courses



Technical assistance for operations and maintenance

Technical assistance for the Philippines

In the Philippines, we are taking part in "the Technical Assistance Project to Establish the Philippine Railways Institute" to establish the institute and formulate the scheme to train personnel, in turn improving their managerial capabilities, in order to establish training system for urban railway staff.

